



Shower - Lissé

Body spray without volume control - polished chrome

Article number: 28 518 979-00



- Ø 2-1/8"
- swivels 25°
- Stream: Rain
- Descaling system
- Flange diameter 2-1/8"
- 1/2" connection
- Water flow rate limited to max. 1.3 gpm

Codes & Standards

- California Energy Commission (CEC)
- ASME A112.18.1/CSA B125.1



polished chrome

Accessory is required for this item.

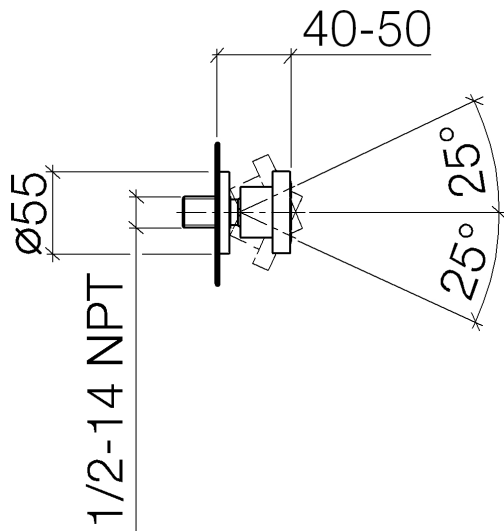


Shower - Lissé

Body spray without volume control - polished chrome

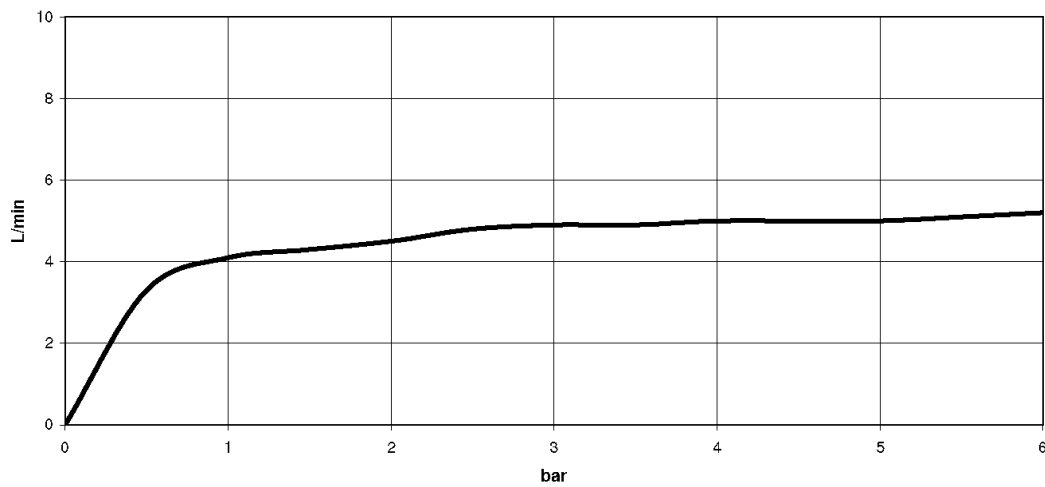
Article number: 28 518 979-00

Dimensional drawing



All dimensions in mm / inch = mm x 0,0394

Flow rate chart





Shower - Lissé

Body spray without volume control - polished chrome

Article number: 28 518 979-00

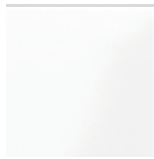
Object surface finish diagram



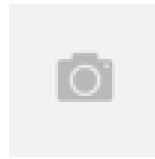
platinum matte
28 518 979-06



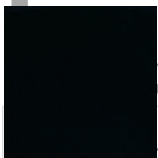
platinum
28 518 979-08



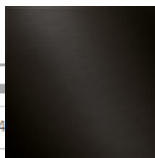
white matte
28 518 979-10



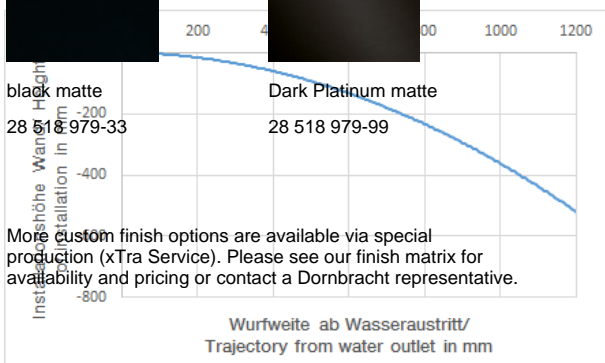
Brushed Durabronze
28 518 979-28



black matte
28 518 979-33



Dark Platinum matte
28 518 979-99



35 080 970-90 0010

Rough-in adapter -

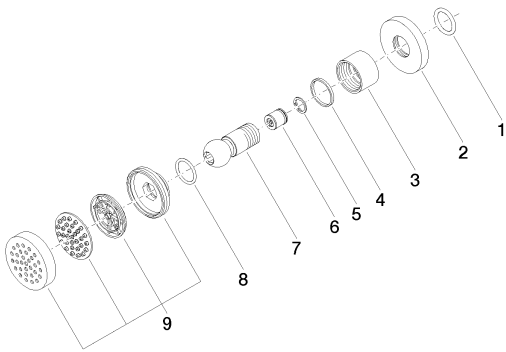


Shower - Lissé

Body spray without volume control - polished chrome

Article number: 28 518 979-00

Spare parts list



Number	Item Number	Designation	Number of units
1	09 14 10 026 90	seal	1
2	09 27 22 003-00	rosette	1
3	09 23 30 026-00	nut	1
4	09 14 15 010 90	ring	1
5	09 16 01 014 90	ring	1
6	09 23 01 048 90	back-flow preventer	1
7	09 21 40 016-00	connection	1
8	09 14 10 015 90	seal	1
9	90 12 05 027 00-00	casing (completely)	1